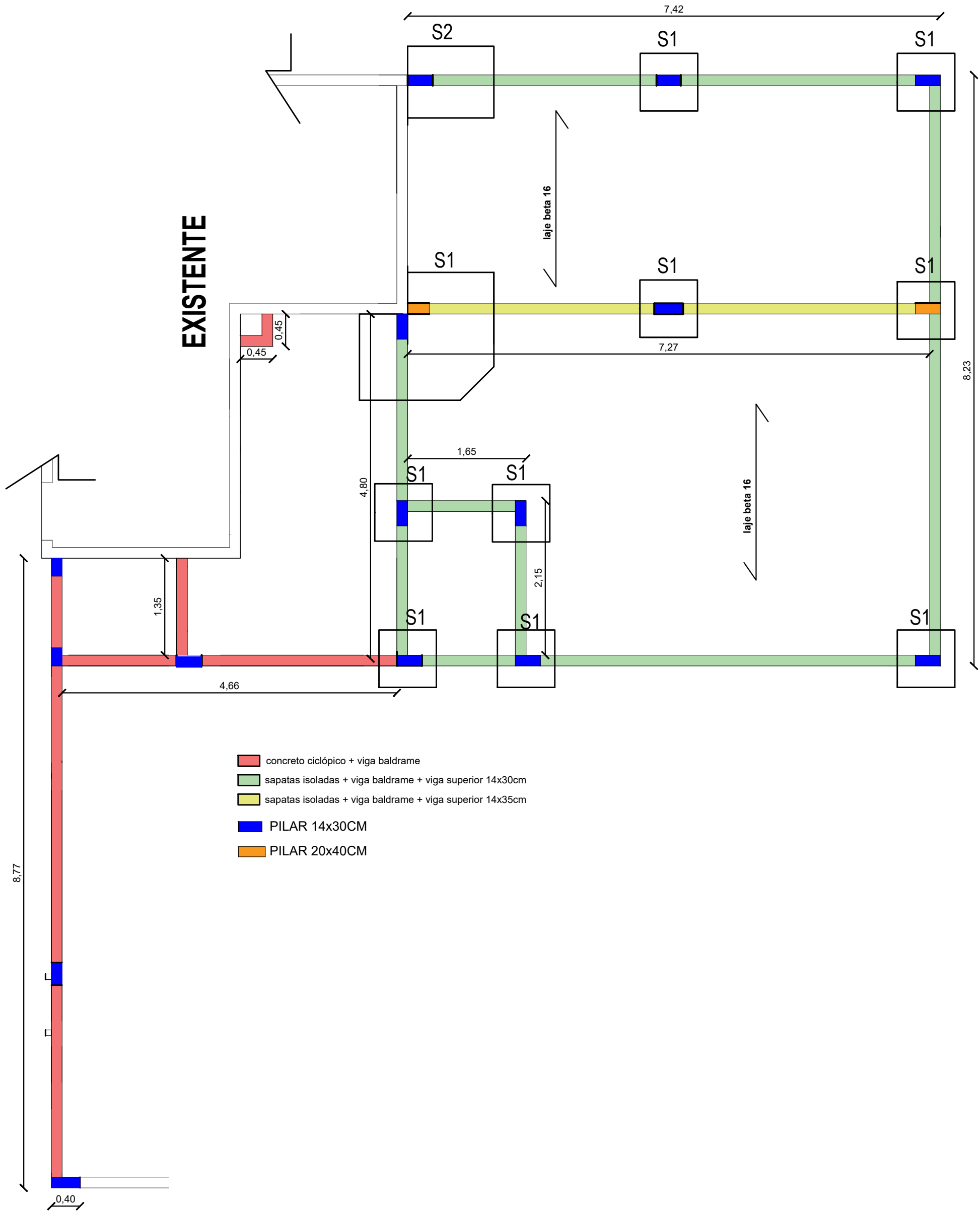
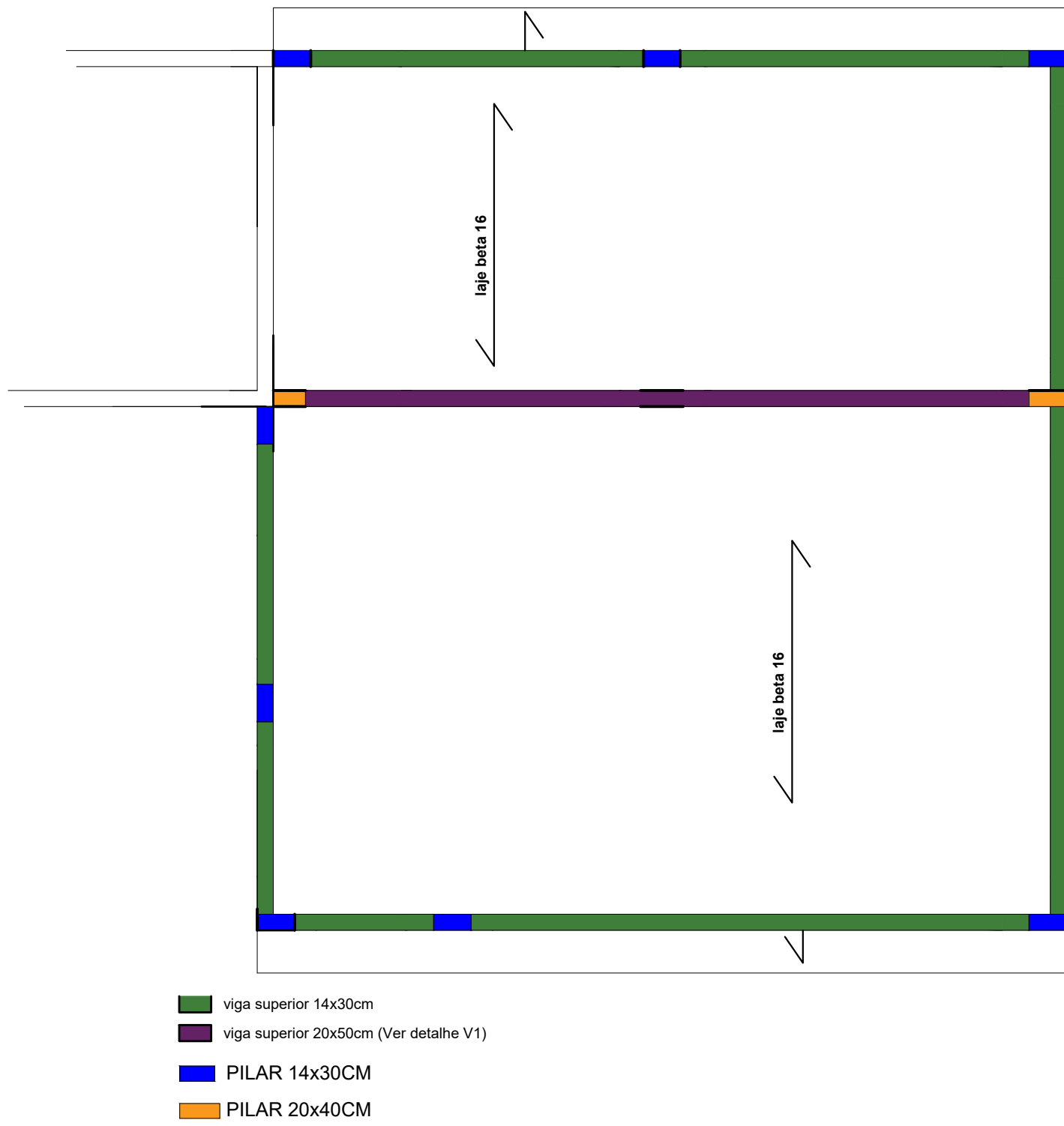


PLANTA DE FORMAS TÉRREO/SUPERIOR  
esc 1:50

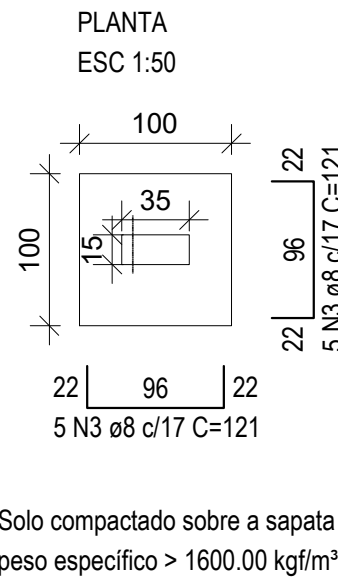


PLANTA DE FORMAS TÉRREO/SUBSOLO  
esc 1:50

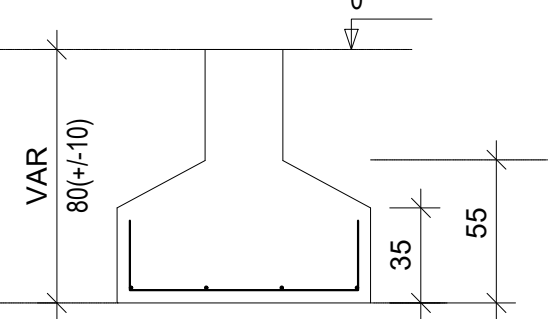


DETALHAMENTO SAPATAS

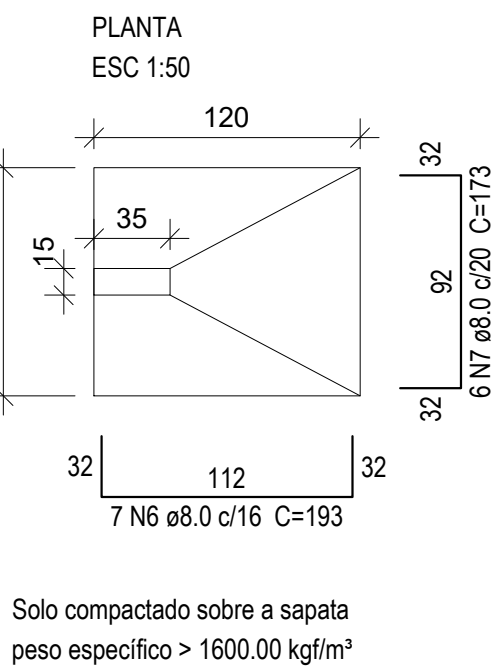
S1



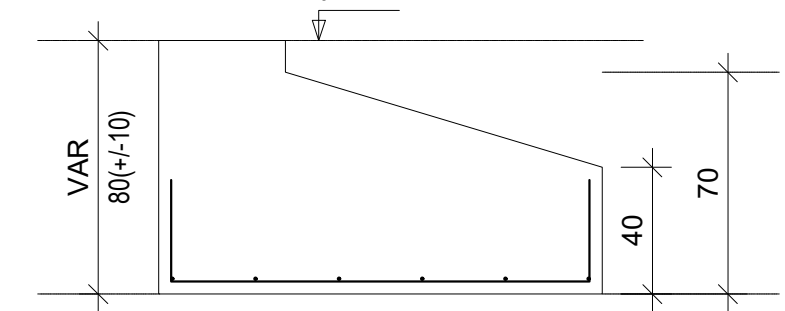
CORTE  
ESC 1:30



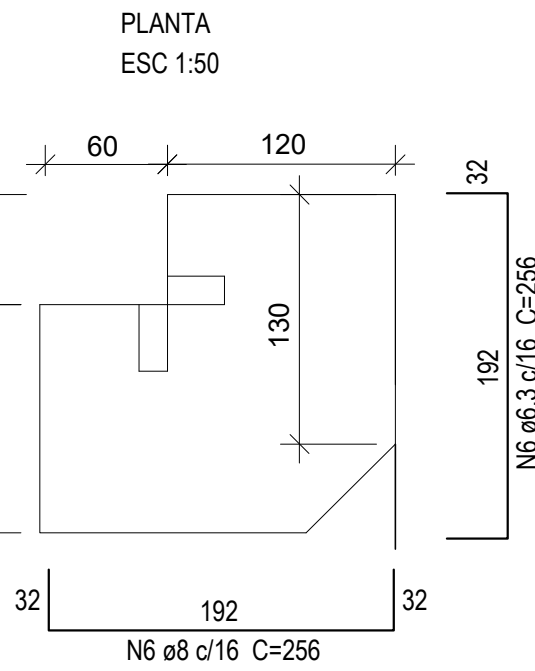
S2



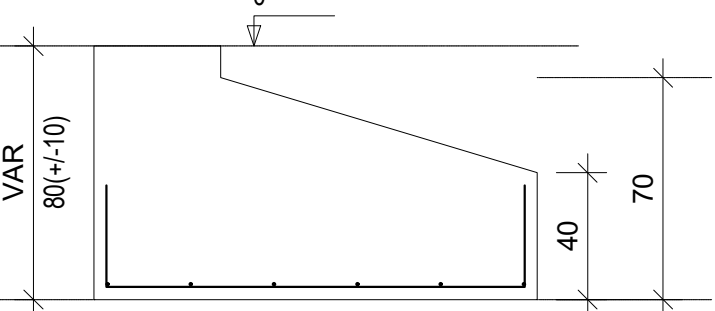
CORTE  
ESC 1:30



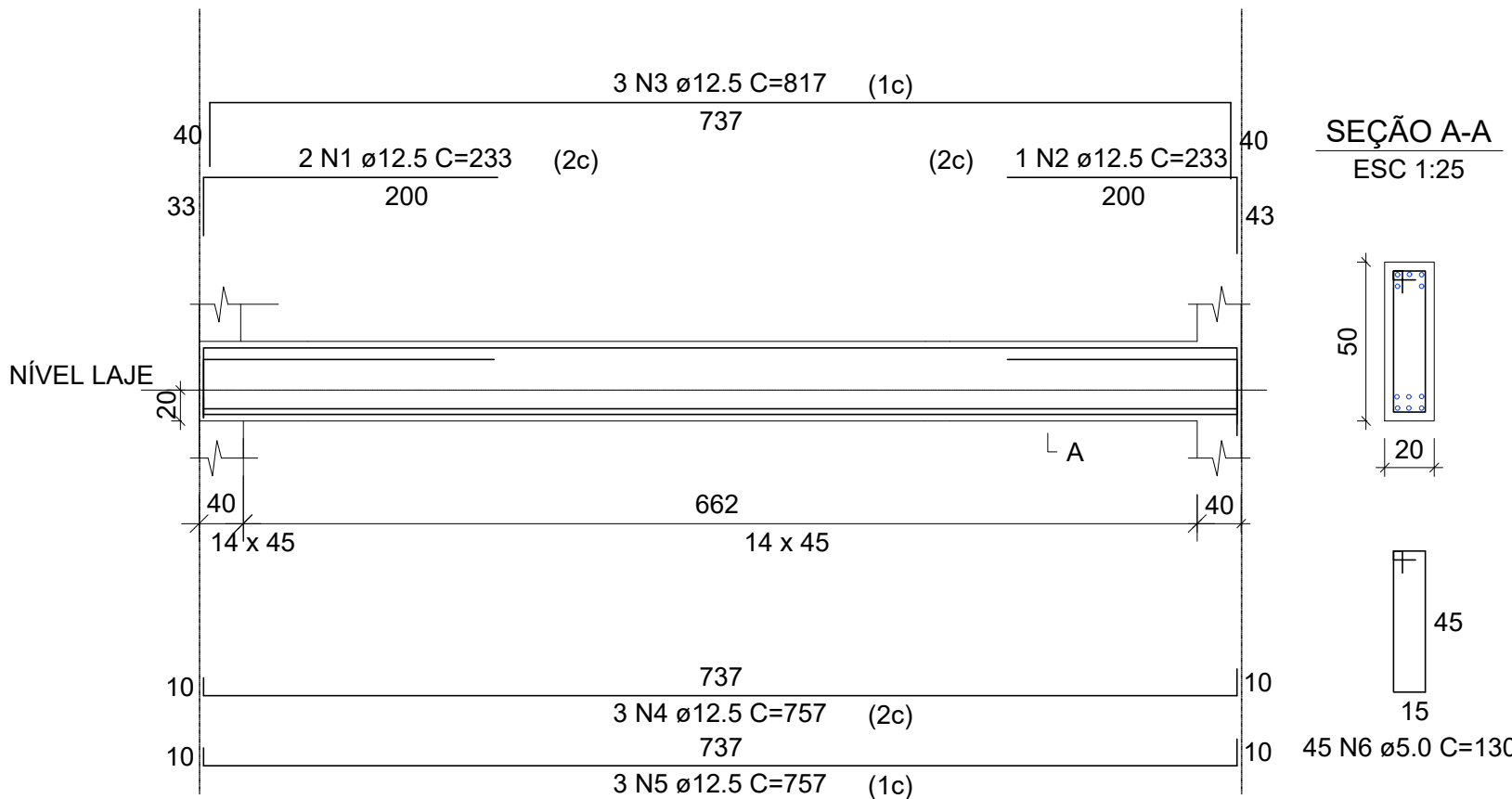
S3



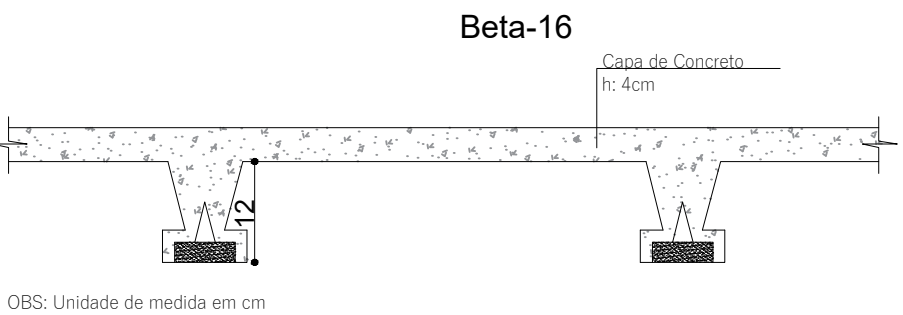
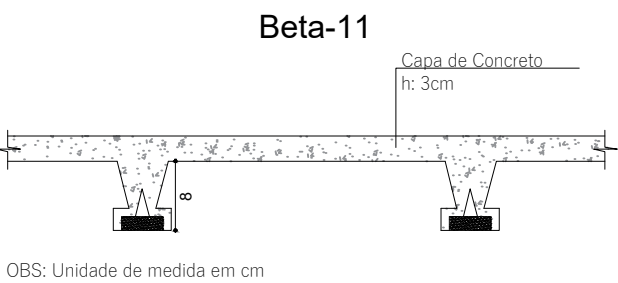
CORTE  
ESC 1:30




DETALHAMENTO V1



CORTE DE LAJE



DEPARTAMENTO MUNICIPAL DE ENGENHARIA					
PROPRIETÁRIO: PREFEITURA MUNICIPAL TENENTE PORTELA					
PROJETO: AMPLIAÇÃO E REFORMA - ESCOLA MUNICIPAL MARCILIO DIAS - Fundação			ÁREA CONSTRUÍDA:		
LOCAL: ALTO ALEGRE TENENTE PORTELA			DATA: MAIO/2022		
			COLABORAÇÃO: TAIRA BALEST SIQUEIRA ESTAGIÁRIA DE ENGENHARIA CIVIL		
			REGISTRO CREA: 180283		
RESPONSÁVEL TÉCNICO: ENG. ELIANDRO TIECKER			ASSINATURA: Responsável Técnico Proprietário		
			ESCALA: S/E		PRANCHA: 03/09